



Thyro-Tabs[®]

(levothyroxine sodium tablets, USP)



The Most Stable Product Available for Treatment of Canine Hypothyroidism

- NEW, unsurpassed shelf life and expiry dating
- NEW, round 120-count bottles. No counting or repackaging costs. Streamlined, on-label product insert.
- Save the clinic time and money
- Nine dosage strengths
- Color-coded for easy identification
- Scored tablets for precise dosage
- Efficacy proven in independent research



LLOYD Thyro-Tabs 120-count bottles make treating canine hypothyroidism as easy as possible for everyone involved.

Convenience
that makes it easier
to provide care.

Thyro-Tabs, levothyroxine sodium, consistently delivers the exceptional quality and stability your clients demand with the confidence and convenience you have come to expect from LLOYD, Inc.

Thyro-Tabs are manufactured under the same stringent FDA guidelines, in the same facilities, with the same care as our human dose version. No other brand inspires that level of confidence.

Advantages

- Consistently Low Cost per Tablet
- Direct-Dispense Cost Efficiency – no counting or repackaging costs with 120-count bottles
- No Counting or Handling – leaves you more time for patient care
- Nine Strengths with Scored Tablets – allows for more accurate dosing
- Maximum Shelf Life & Stability
- Minimum Liability Risk – dispense-ready 120-count bottles
- Manufactured Under Stringent GMP – FDA Good Manufacturing Practices



Versatility

so you can treat as you see fit.

Thyro-Tabs tablets are manufactured and packaged to give you an easier way to treat canine hypothyroidism and your clients a more effective way to ensure compliance.

Thyro-Tabs are packaged in 120-count dispense ready bottles with the product insert on the label. This packaging saves the clinic time and money.

Delivering excellence you can count on.

For over 50 years, LLOYD, Inc. has been providing the veterinary industry with treatment solutions that enable veterinarians and their staff to put the best interests of animals first. Through convenience and quality, we believe in providing you with a resource worthy of your confidence.

NINE COLOR-CODED DOSAGE STRENGTHS

Potency	Color
0.1 mg (100 µg)	Yellow
0.2 mg (200 µg)	Pink
0.3 mg (300 µg)	Green
0.4 mg (400 µg)	Maroon
0.5 mg (500 µg)	White
0.6 mg (600 µg)	Purple
0.7 mg (700 µg)	Orange
0.8 mg (800 µg)	Blue
1.0 mg (1,000 µg)	Tan

Packaged in 120-count bottles.

Thyro-Tabs®

(levothyroxine sodium tablets, USP)

Parameters for levothyroxine in canine serum

Based on studies conducted by LLOYD in cooperation with two commercial laboratories, the following parameters for total T4 (TT4) concentrations in canine serum have been established.

Normal (euthyroid):

18 to 32 ng/mL (1.8 to 3.2 µg/dL).

Possible hypothyroid:

10 to 18 ng/mL (1.0 to 1.8 µg/dL).

Hypothyroid:

less than 10 ng/mL (< 1.0 µg/dL). A truly hypothyroid animal should be showing some clinical signs associated with the disease.

A resting serum TT4 concentration of 18 ng/mL or above signifies that hypothyroidism is unlikely in dogs. Normally, the more the TT4 concentration exceeds this value, the less likely that a dog is hypothyroid. A dog with a TT4 value < 18 ng/mL that is exhibiting signs of hypothyroidism should have the diagnosis confirmed with free T4 (fT4) and TSH analysis.

Modes of action

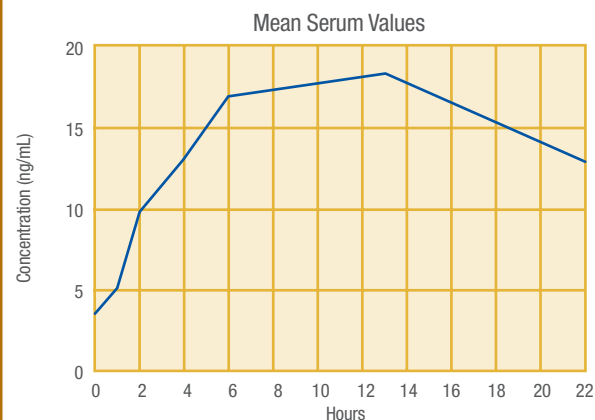
L-thyroxine is a naturally circulating thyroid hormone endogenously secreted by the canine thyroid gland. Levothyroxine sodium provided by Thyro-Tabs® tablets cannot be distinguished from L-thyroxine. The primary regulator of thyroid function is thyroid-stimulating hormone (TSH), which is synthesized and secreted by the pars distalis of the adenohypophysis (anterior pituitary). The mediator from the hypothalamus, which exerts a continuous influence over the pituitary release of TSH, is thyrotropin-releasing hormone (TRH). Thyroid hormones influence virtually every body organ, either by their effect on growth and development or by the hormones' metabolic effects.

LLOYD, Inc. of Iowa
P.O. Box 130
Shenandoah, IA 51601 USA
1-800-831-0004
www.lloydinc.com



Efficacy proven in clinical studies

CANINE T4 BIOAVAILABILITY STUDY



Blood serum thyroxine (T4) concentration in four thyroidectomized dogs given a single Thyro-Tabs® dose of 20 µg per kilogram body weight.

Research conducted by The Animal Medical Center, New York, New York

CLINICAL RESPONSE TO THYRO-TABS LEVOTHYROXINE THERAPY

	Dosage (µg/kg/day)	Initial T4 (µg/dL)	End T4 (µg/dL)	Initial BMR (Kcal/kg/day ^{0.75})	End BMR (Kcal/kg/day ^{0.75})
Minimum	14.20	0.02	1.74	49.52	69.98
Maximum	50.00	2.79	8.57	131.93	140.42
Mean	28.56	0.97	4.34	80.61	94.32
Standard Deviation	13.33	0.95	1.96	21.79	19.06

BMR = Basal Metabolic Rate

All 14 dogs used in this study had a low circulating basal T4 concentration and/or clinical signs and clinical pathology results which supported hypothyroidism as a diagnostic possibility. After confirmation of hypothyroidism, treatment was initiated with Thyro-Tabs®. Follow-up clinical evaluations and T4 measurements were conducted for a four-month period. The results of BMR and T4 measurements and improvement in clinical signs confirmed that Thyro-Tabs® tablets are effective in treating hypothyroidism in dogs.

Research conducted at Department of Biomedical Sciences, College of Veterinary Medicine, Colorado State University, Fort Collins, Colorado

CAUTION: Federal law restricts this drug to use by or on the order of a licensed veterinarian. **INDICATIONS:** For use in dogs for correction of conditions associated with low circulating thyroid hormone (hypothyroidism). **DOSAGES:** The initial recommended daily dose is 0.1 to 0.2 mg/10 pounds (4.5 kg) body weight in single or divided doses. Dosage is then adjusted by monitoring the T4 blood levels of the dog every four weeks until an adequate maintenance dose is established. **ADMINISTRATION:** Thyro-Tabs® may be administered orally or placed in the food. **WARNINGS:** The administration of levothyroxine sodium to dogs to be used for breeding purposes or in pregnant bitches has not been evaluated. There is evidence to suggest that administration to pregnant bitches may in some instances affect the normal development of the thyroid gland in unborn pups. **HOW SUPPLIED:** Thyro-Tabs®: 0.1 mg, 0.2 mg, 0.3 mg, 0.4 mg, 0.5 mg, 0.6 mg, 0.7 mg, 0.8 mg, 1.0 mg in 28, 120, and 1,000 count.

READ PACKAGE INSERT FOR COMPLETE DIRECTIONS

PSIBTT0112